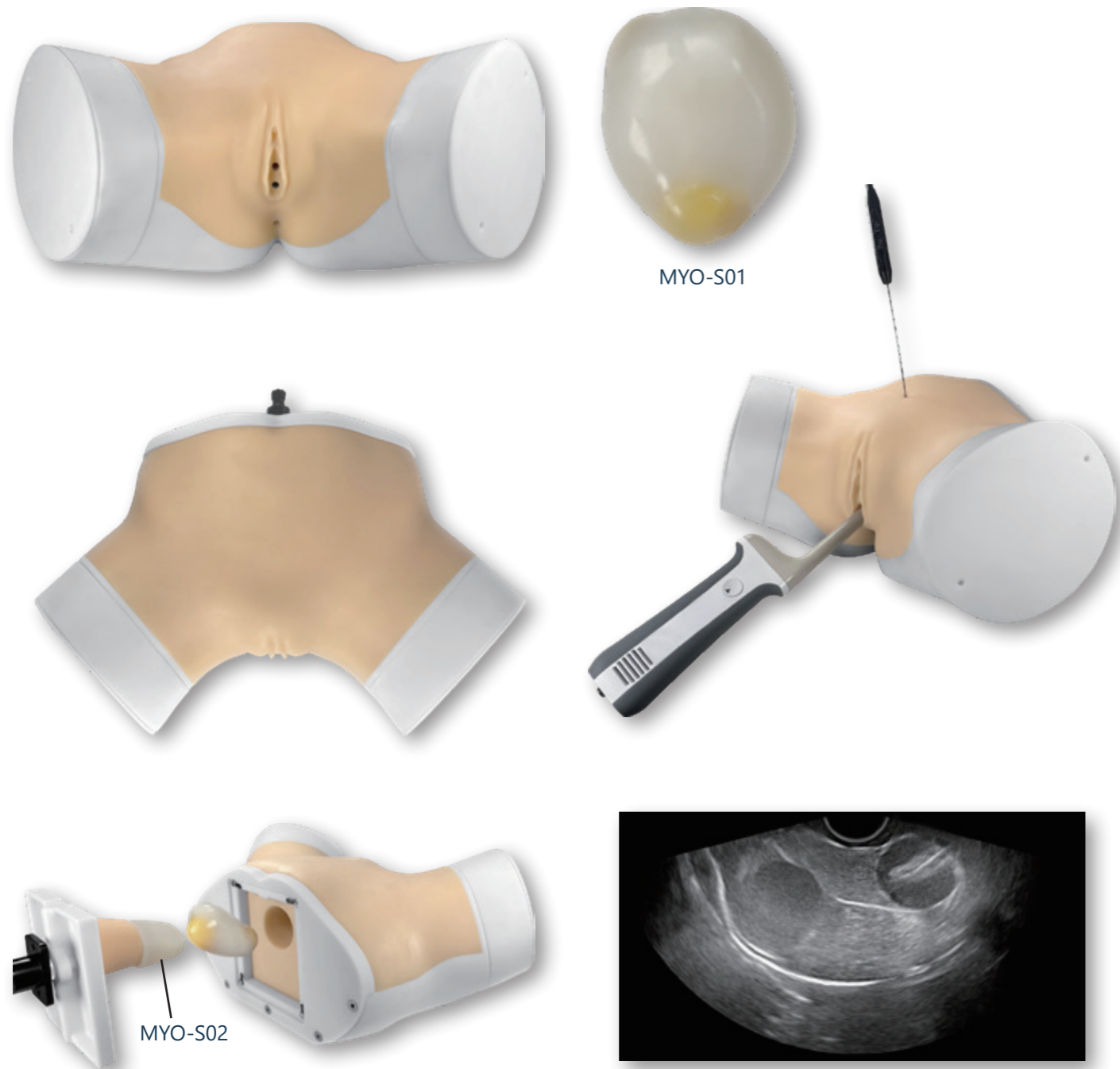


# Uterine Fibroids (Myomas) Biopsy and Ablation Training Platform

This 1:1 female pelvis model, crafted with realistic materials, supports hands-on training for gynecological procedures, including fibroid ablation and ultrasound-guided examinations. The platform enhances procedural accuracy and skill-building, offering a lifelike experience for effective practice in gynecological care.



MYO-S01

MYO-S02

## Procedures

- Transcutaneous uterine fibroids microwave ablation.
- Transcutaneous uterine fibroids radiofrequency ablation.
- Transcutaneous uterine fibroids laser ablation.
- Transcutaneous uterine fibroids cryoablation.
- Transvaginal ultrasonography.
- Abdominal ultrasound.
- Hysteroscopy checking.
- Laparoscopic visualization checking.
- Laparoscopic myomectomy.
- Basic gynecological examination.
- Cervical cap, female condom, and contraceptive sponge placement.
- Foley catheter indwelling.

## Features

- 1:1 female pelvis model made of soft material, supporting up to 200 punctures.
- Ultrasound compatible.
- Abdominal and vaginal scanning access.
- Anatomical features:
  - Uterus with endometrium.
  - Myometrium and perimetrium.
  - Bladder with urethra.
- Two 3.2 cm OD fibroids are embedded in the inner wall of the uterus and can be seen under ultrasound.
- Modular design leads to cost-effective training.
- Realistic appearance provides trainees with more immersive experiences.
- The platform can be carried out using a portable case.

## Specification

Depth of the vagina	Approximately 6 cm
Net Dimensions (L × W × H)	30.5 cm × 49 cm × 22.5 cm
Net Weight	10.5 kg
Gross Dimensions (L × W × H)	70 cm × 40 cm × 32 cm
Gross Weight	17.5 kg

## Models

### MYO-B01

- » Applicable for RFA, MWA, laser ablation, cryoablation and other gynecological procedures
- » Includes portable case, female pelvis base, uterus (MYO-S01), conductive contact block for RFA (MYO-S02) and nonconductive contact block (MYO-S03)

## Spare Parts

MYO-S01	Uterus with two 3.2 cm OD fibroids embedded for ablation
MYO-S02	Conductive contact block for RFA
MYO-S03	Nonconductive contact block