

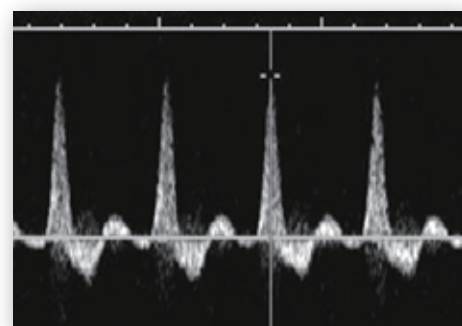
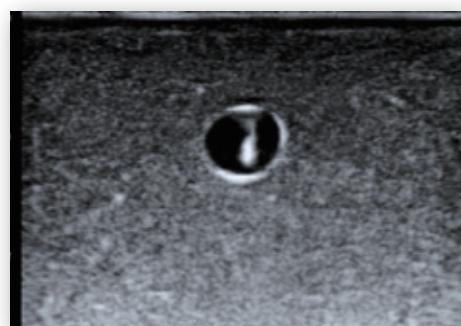
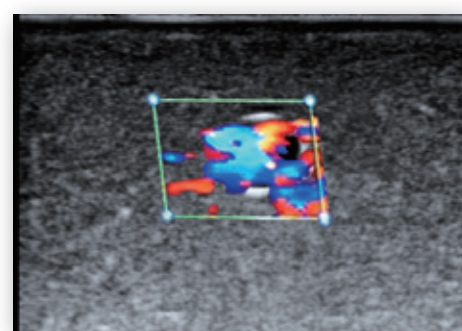
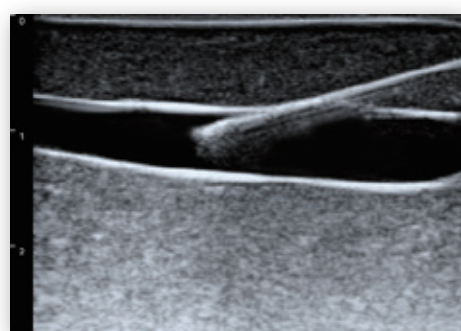
# Vascular Access Phantom (4 Vessels – 2 Straight & 2 Curved)

Featuring exceptional ultrasound imaging performance and self-healing materials, this phantom ensures effective and durable training. With four palpable vessels of varying shapes and depths, it provides an ideal platform for healthcare professionals to practice and refine basic vascular access skills with accuracy and confidence.



\*The path of the internal vessels.

\*Embedded vessels vary in depth.



## Procedures

- Ultrasound-guided vascular puncture.
- IV injection.
- Intermittent catheterization.
- Intradermal injection.

## Features

- Clear vessel image under ultrasound.
- Made of muscle-like and self-healing material.
- Provide force feedback when practicing.
- Human body curvature design.
- 4 vessels, 2 straight and 2 curved, are embedded at different depths.
- Training eye-hand coordination capabilities under an immersive environment.
- Realistic appearance provides trainees with more immersive experiences.
- All-in-one design, easy to carry.

## Specification

Vessel ID	(7 ± 1) mm
Depth of vessels embedded	Middle : 2 mm under surface External : 2-10 mm under surface
Net Dimensions (L × W × H)	24.5 cm × 16 cm × 7 cm
Net Weight	1.2 kg
Gross Dimensions (L × W × H)	33.5 cm × 23 cm × 10.5 cm
Gross Weight	1.6 kg

## Models

### VAP-B01

- » Applicable for ultrasound-guided IV injection
- » Includes the model, one set of Luer 3-way valve (VAP-S01) and 10 cm Luer extension tube (VAP-S02)

## Spare Parts

VAP-S01	Luer 3-way valve
VAP-S02	10 cm luer extension tube